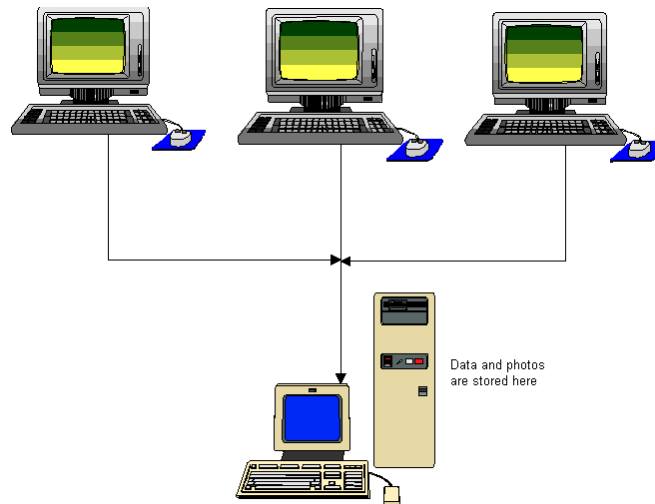


Using PixFiler on a Network

With PixFiler you can create a database on a network server and users on the computers in a network can access the photos simultaneously.



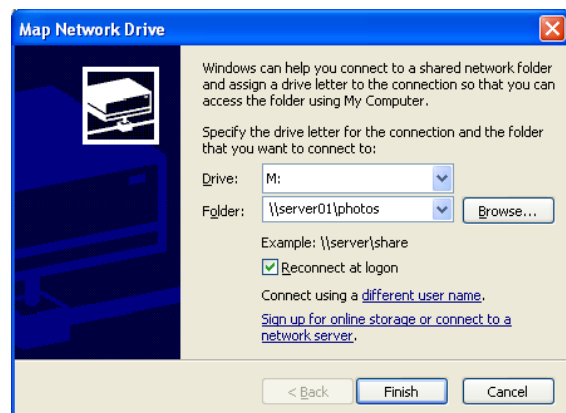
Installation

The installation is quite easy. You have to run the installation procedure on each computer (not the server). This is very quick and will take less than 30 seconds per computer. During the installation you can also specify that this computer is not allowed to update anything in the database. (See the 'Getting Started Guide' for more details about the installation).

Configuration

Not much configuration are necessary to make this work but there are a few steps that are important.

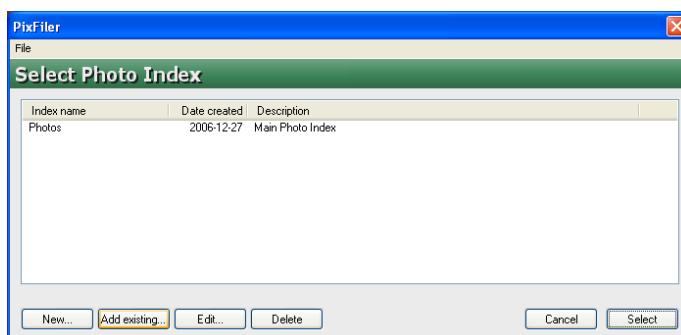
- 1. Map a drive to where the photos are stored.** Start Windows Explorer and go to Map Network Drive in the Tools Menu. If your photos already are stored on a network server. It's quite likely that you have already done this. If not, choose a letter for the drive you're defining and click on the browse button to locate the folder with the photos. Also check the 'Reconnect at login' so the Network Drive is automatically created next time you restart your computer. You must do this on



each computer that will access the photos. You don't have to use the same letter for the drive on each computer but using the same letter will make the program a little faster.

2. **Create the database.** Start PixFiler on one of the computers. Select New Photo Index in the File Menu. Choose a location for this Photo Index that is accessible from all the computer.

3. **Connect the other computers to this index.** Start PixFiler and either click on the Select Button in the start-up window if this is the first time PixFiler is started on this computer or choose Select Photo Index from the File Menu. This form will be empty the first time you use it. Click on the Add Existing button and locate the database that was created on the network.



Enter any comments you want. Now you will see the index in the list in this form. Click on the name to highlight the line and click the Select button.

Now you're ready. That's all there is to it. Now you can start adding photos and information about the photos into the Photo Index.

Need more help?

Please do not hesitate to contact BR Software Helpdesk at help@br-software.com if you need more assistance or if you have any questions.